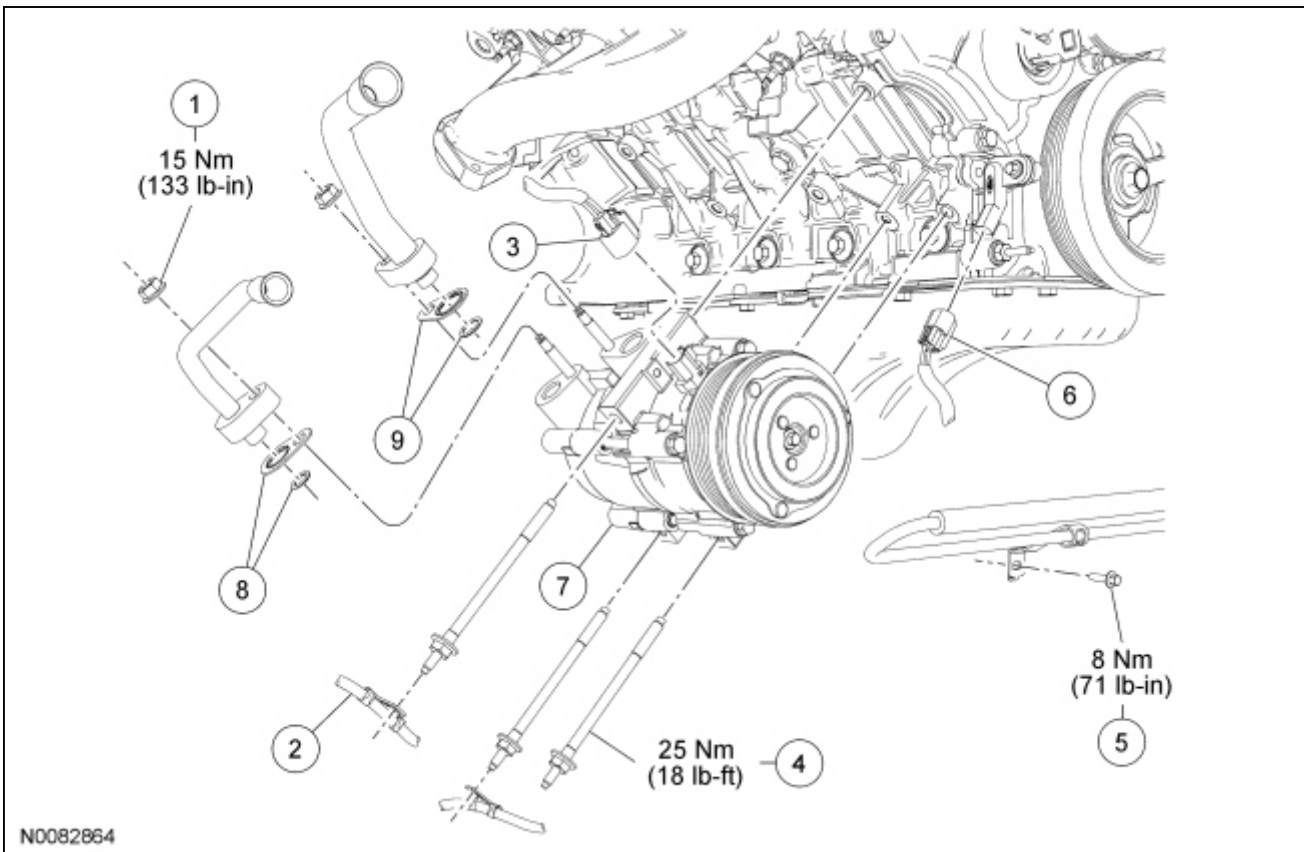


## Air Conditioning (A/C) Compressor — 4.6L, 5.4L

### Material

| Item  | Specification |
|---|---------------|
| Motorcraft® PAG Refrigerant Compressor Oil<br>YN-12-D | WSH-M1C231-B  |



| Item | Part Number | Description  |
|------|-------------|--|
| 1    | N805334     | Compressor fitting nut (2 required)                                    |
| 2    | —           | Wire harness retainer (2 required) (part of 12B637)                    |
| 3    | —           | Field coil electrical connector (part of 12B637)                       |
| 4    | W705811     | A/C compressor stud (3 required)                                       |
| 5    | W505255     | Power steering pressure hose bracket bolt                              |
| 6    | —           | Crankshaft Position (CKP) sensor electrical connector (part of 12B637) |
| 7    | 19703       | A/C compressor   |
| 8    | 19B596      | O-ring seal and gasket seal kit  |
| 9    | 19B596      | O-ring seal and gasket seal kit  |

### Removal and Installation

**NOTICE:** If installing a new air conditioning (A/C) compressor due to an internal failure of the old unit,

the following procedures must be carried out to remove contamination from the A/C system. Failure to remove contamination from the A/C system, if present, will result in poor A/C performance and/or damage to the new A/C compressor and other components.

- If A/C flushing equipment is available, carry out flushing of the A/C system prior to installing a new A/C compressor. For additional information, refer to [Section 412-00](#).
- If A/C flushing equipment is not available, carry out filtering of the A/C system after a new A/C compressor has been installed. For additional information, refer to [Section 412-00](#).
- Install a new evaporator core orifice, as directed by the A/C flushing or filtering procedure.
- Install a new suction accumulator as directed by the A/C flushing or filtering procedure.

**NOTE:** Installation of a new suction accumulator is not required when repairing the A/C system, except when there is physical evidence of contamination from a failed A/C compressor or damage to the suction accumulator. Damage to the suction accumulator includes leaks in the suction accumulator, physical damage to the suction accumulator shell or desiccant, or moisture contamination. Moisture contamination results only from a complete loss of refrigerant and equalization of the refrigerant system pressure with atmospheric pressure for a period longer than one hour. If even a slight amount of positive refrigerant pressure is present in the system before repairs are carried out, the suction accumulator should not be replaced.

**NOTE:** A new A/C compressor may come equipped with an A/C clutch disc and hub, A/C compressor pulley and A/C clutch field coil already installed. If these components are not pre-installed, it will be necessary to transfer these parts from the old A/C compressor to the new compressor prior to installations of the A/C compressor if suitable for reuse.

1. With the vehicle in NEUTRAL, position it on a hoist. For additional information, refer to [Section 100-02](#).
  2. If flushing of the A/C system has not been carried out, recover the refrigerant. For additional information, refer to [Section 412-00](#).
  3. Remove the drive belt from the A/C compressor pulley.
  4. Remove the 2 compressor fitting nuts and disconnect the fittings.
    - Discard the O-ring seals and gasket seals.
    - To install tighten to 15 Nm (133 lb-in).
  5. Remove the power steering pressure hose bracket bolt.
    - To install, tighten to 8 Nm (71 lb-in).
  6. Disconnect the Crankshaft Position (CKP) sensor electrical connector.
  7. Disconnect the field coil electrical connector.
  8. Detach the 2 wire harness retainers from the A/C compressor studs.
  9. Remove the 3 A/C compressor studs.
    - To install, tighten to 25 Nm (18 lb-ft).
  10. To install, reverse the removal procedure.
    - If a new A/C compressor is to be installed, the clutch assembly may need to be transferred from the old unit to the new unit. For additional information, refer to [Clutch and Clutch Field Coil](#) in this section.
    - Install new O-ring seals and gasket seals.
    - If filtering of the refrigerant system is not to be carried out, lubricate the refrigerant system with the correct amount of clean PAG oil. For additional information, refer to [Section 412-00](#).
  11. If filtering of the refrigerant system is not to be carried out, evacuate, leak test and charge the refrigerant system. For additional information, refer to [Section 412-00](#).
-

