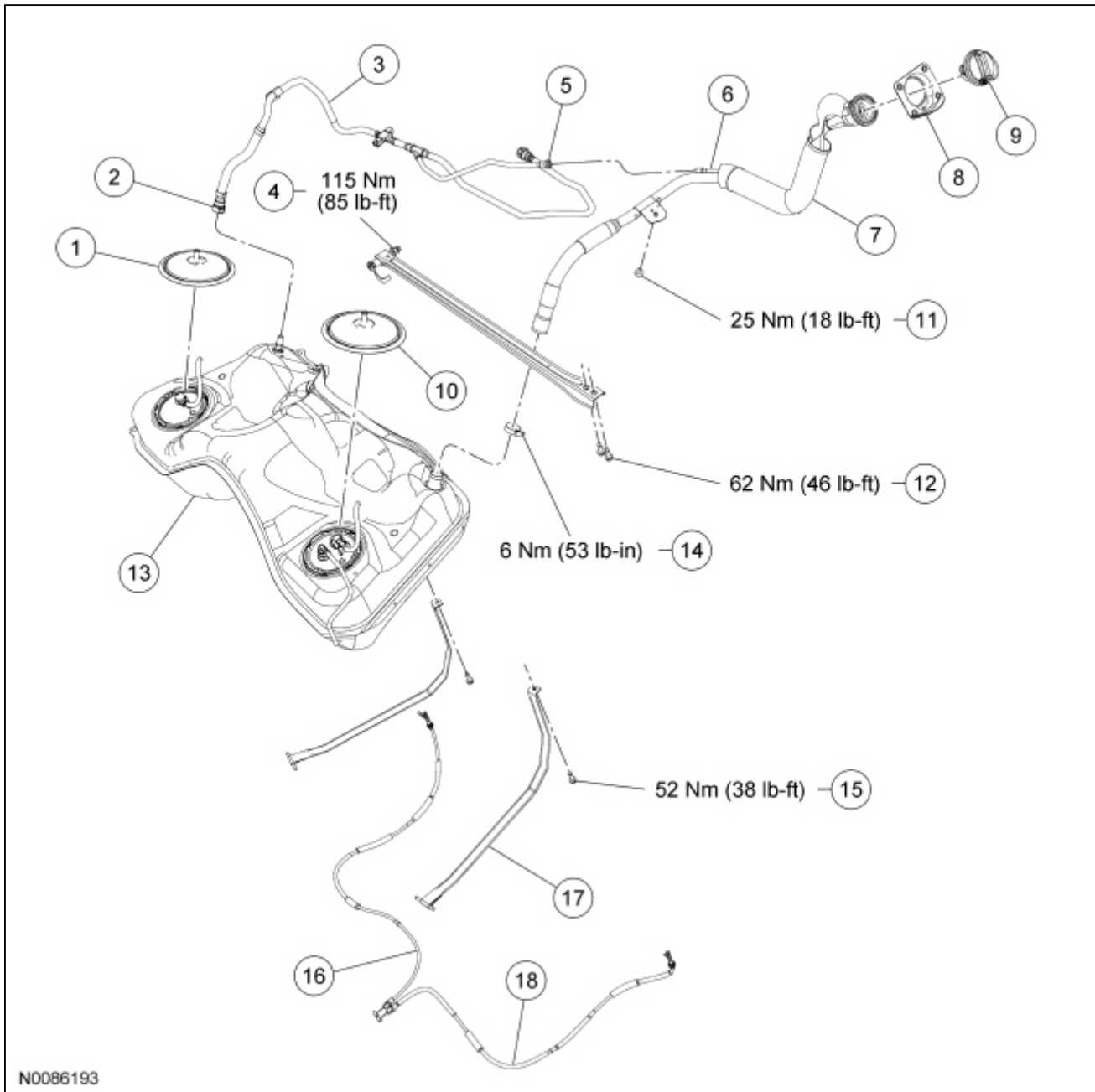


Fuel Tank and Filler Pipe — Exploded View

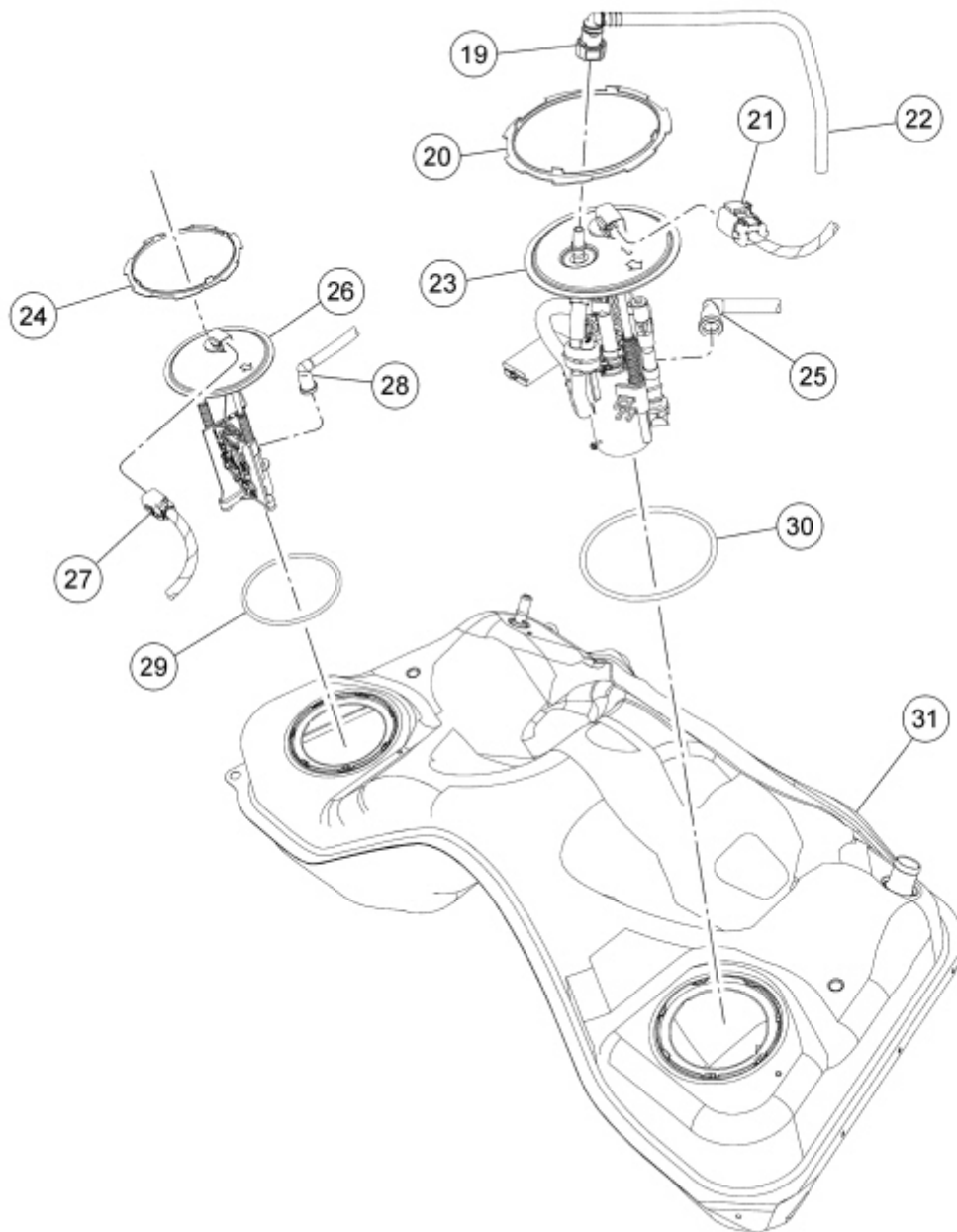
Fuel Tank and Filler Pipe



Item	Part Number	Description
1	9C335	Fuel level sensor access cover
2	—	Fuel vapor tube assembly-to-fuel tank quick connect coupling (part of 9E325)
3	9E325	Fuel vapor tube assembly
4	W520214	Lateral stiffener bar-to-body mount nut
5	—	Fuel vapor tube assembly-to-fuel tank filler pipe

		recirculation tube spring lock coupling (part of 9E325)
6	—	Fuel tank filler pipe recirculation tube (part of 9034)
7	9034	Fuel tank filler pipe
8	9A212	Fuel tank filler pipe upper retainer
9	9030	Fuel tank filler cap
10	9C335	Fuel Pump (FP) module access cover
11	W713388	Fuel tank filler pipe bracket bolt
12	W711331	Lateral stiffener bar-to-body bolt (2 required)
13	9002	Fuel tank
14	W525937	Fuel tank filler pipe hose clamp
15	W710947	Fuel tank strap bolt (2 required)
16	2A635	Rear parking brake cable (RH)
17	9055	Fuel tank strap (2 required)
18	2A823	Rear parking brake cable (LH)

Fuel Pump Module, Fuel Level Sensor and Fuel Tank



N0086194

Item	Part Number	Description
19	—	Rear fuel tube-to- FP module quick connect coupling (part of 9J279)
20	9C385	FP module lock ring
21	14A464	FP module electrical connector
22	9J279	Rear fuel tube
23	9H307	FP module
24	9C385	Fuel level sensor lock ring
25	—	Internal fuel tube-to- FP module quick connect coupling (part of 9002)
26	9275	Fuel level sensor
27	14A464	Fuel level sensor electrical connector
28	—	Internal fuel tube-to-fuel level sensor quick connect coupling (part of 9002)
29	9E275	Fuel level sensor O-ring seal

30	9E275	FP module O-ring seal
31	9002	Fuel tank

1. For additional information, refer to the procedures in this section.
-